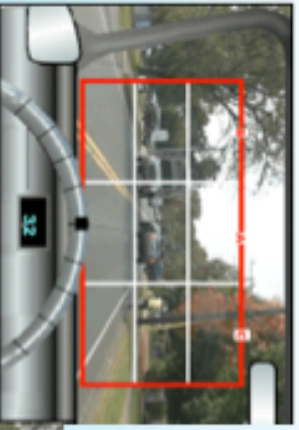


Driver or Passenger Gains Awareness

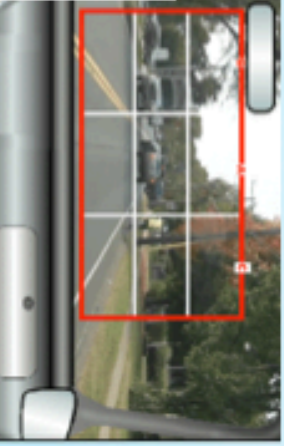
Any driver, or passenger, will gain awareness of traffic situations by practicing use of the Selective Attention Matrix.

Driver's View



The Selective Attention Matrix provides the same view for the driver and the passenger.

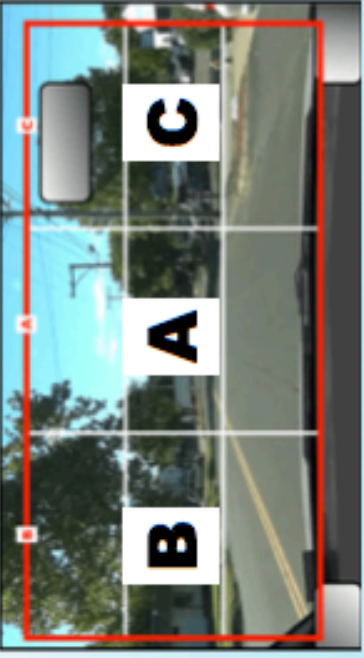
Passenger's View



Copyright © Frederik R. Mottola, 2015

WARNING: Cues Are Not to be read while the car is moving.

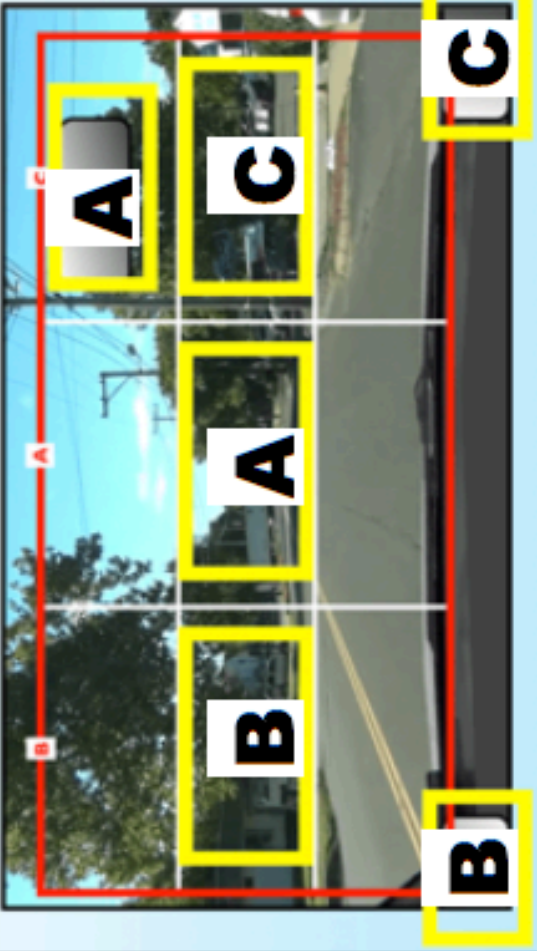
Selective Attention Matrix



Using the Selective Attention Matrix makes it easy to Find, Solve, and Control Critical Seconds.

Practice Using Six Searching Locations

Selective Attention Matrix



Six Searching Locations Control Your Buffer!

Go Condition means you have an open front zone and space to enter.

1. Keep Same Speed
or
2. Increase Speed

Keep Speed

Slow Condition requires a speed reduction, which could be achieved by any one, or all three, of these techniques:

1. Ease Off Gas Pedal
2. Cover Brake
3. Apply Brake

Reduce Speed

Is it a Go or Slow Condition?