

**Print this Mind Cue Card.** Fold it and place it in the car held by the glove box. See the movement of the car as turns are being made, and perform the following two activities.

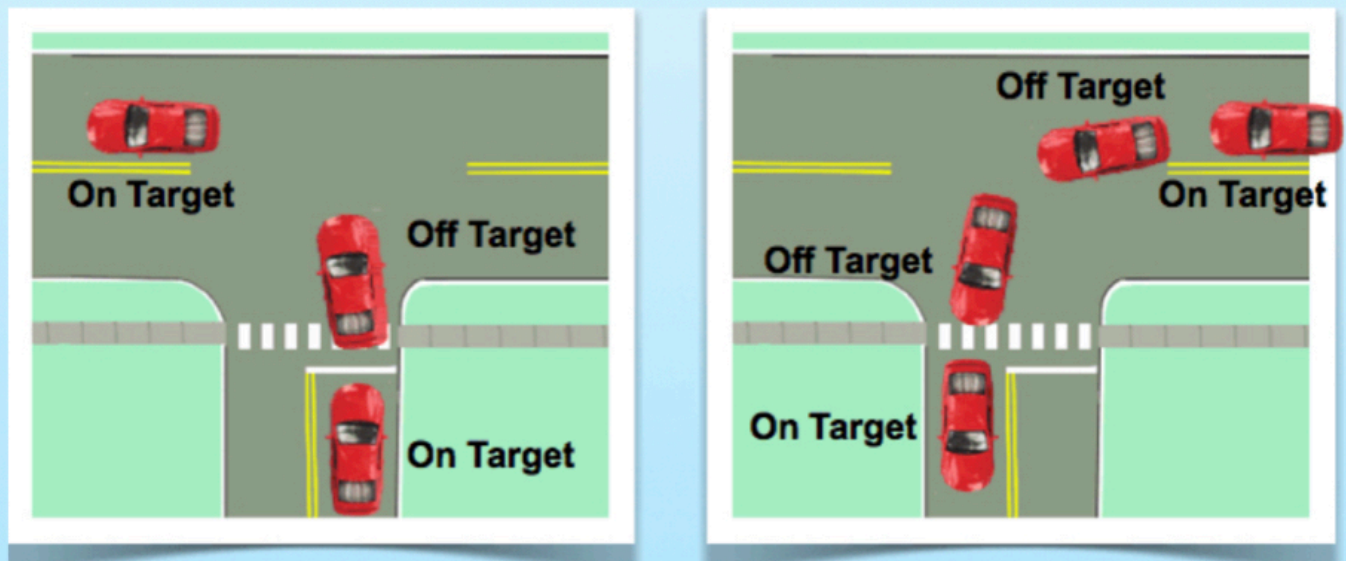
**A. Detect a Vehicle Moving Off Target as a Simulated Skid Condition:**

1. Before a turn is made, locate a target that the car is heading toward.
2. When the driver turns the steering wheel, try to detect the very beginning of the front of car moving off target.
3. Think that if this were a skid, not a turn being made, you would want to turn the steering wheel to get the car back on target. So, pretend you have a steering wheel and turn the wheel back on target — keep your head pointing to the target.
4. Repeat this activity until you are able to see the very slightest movement off target.

----- Fold here -----



Mind Cue Card



**Directions:** As Co-Driver look to the target area as turns are being made to see the **Off-Target** and **On-Target** moment of the turn.

H01-0521 • Copyright © Frederik R. Mottola, 2006, 2018

----- Fold here -----

**B. Using Transition Pegs to Make Precision Turns**

1. Know which direction the driver will be making a turn.
2. Before the driver turns the steering wheel, turn your head to visualize the “target area” the car will be heading toward.
3. When the driver begins turning the steering wheel (which you should see with your fringe vision), you turn your imaginary steering wheel until the car reaches the Tpeg.
4. At the Tpeg, there are two things you need to do at the exact same time:
  - a. **Increase acceleration** by pressing your foot onto an imaginary pedal.
  - b. **Turn the steering wheel in the opposite direction** (if you were making a left turn, at the Tpeg you will turn the steering wheel to the right) until the car is “on target.”
5. The “steering wheel” should be in the straight position when the car is on target.