

## Make 45° Search at LOS Blockages



Whether a driver, or passenger, practice will provide perfect timing with split seconds of accuracy.



Search is too early.



Perfect timing.



No awareness,  
which is how drivers  
get victimized.

**Directions for use:** Before placing the Cue Card in your glove box holder, read the information. Then practice in a parking lot how to search beyond parked vehicles at a 45 degree angle.

## Action to Take:

When passing vehicles they become LOS-POT Blockages and could produce a Critical Second springing out into your Path-Of-Travel.

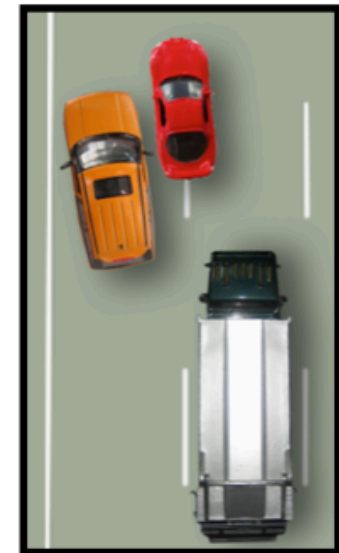
**LOS Blockages are caused by:** Vehicles parked, vehicles stopped to make left turns, vehicles entering the roadway, slow moving vehicles, trees, bushes, signs, snow banks, and buildings.

**LOS Blockages takes away your Buffer.** Attention and speed control is necessary to prevent vehicles, pedestrians, and animals from surprising you. You will acquire awareness of traffic events to eliminate being victimized by others actions. **"Cover" your brake for mental readiness.**

**Reward for making 45° searches:** When you acquire the habit of searching at a 45 degree angle when approaching a LOS blockage, your attention will be focused on the most critical second in need of being managed. It will reduce stress and keep you in control of others' wrongful actions.

Copyright © Frederik R. Mottola, 2016, 2019 • H053-4

**WARNING:** Cues Are Not to be read while the car is moving.



**45° Search at LOS -or- Surprise!**